

advanced technology for realtime physical activity monitoring

tecnología avanzada para la monitorización de la actividad física en tiempo real



GPS



ACCEL



GYRO



COMP



HR



ANT+

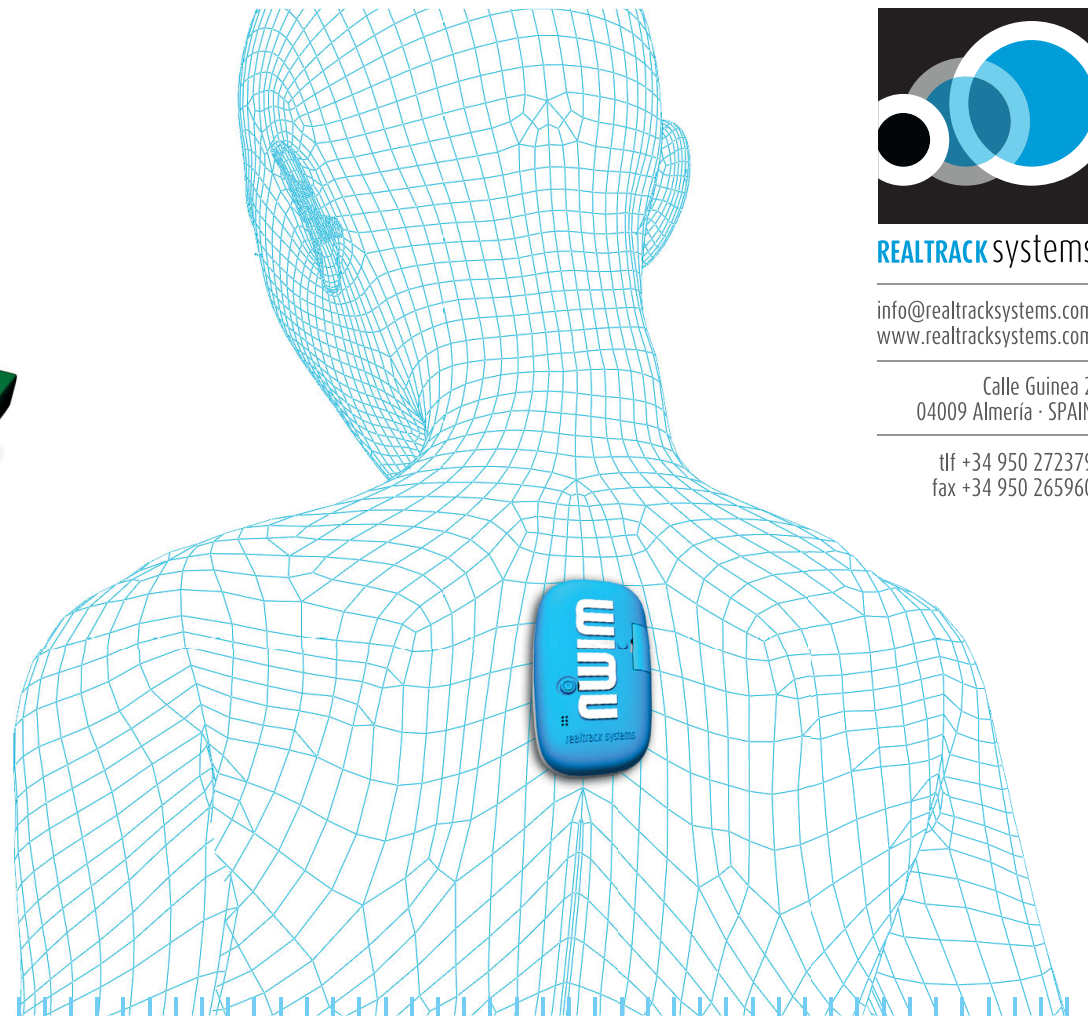


BARO



**wimu**

REALTRACK systems



REALTRACK systems

info@realtracksystems.com  
www.realtracksystems.com

Calle Guinea 2  
04009 Almería · SPAIN

tlf +34 950 272379  
fax +34 950 265960

sports science  
ciencia del deporte

training and simulation  
entrenamiento y simulación

biomedical science  
ciencias de la salud

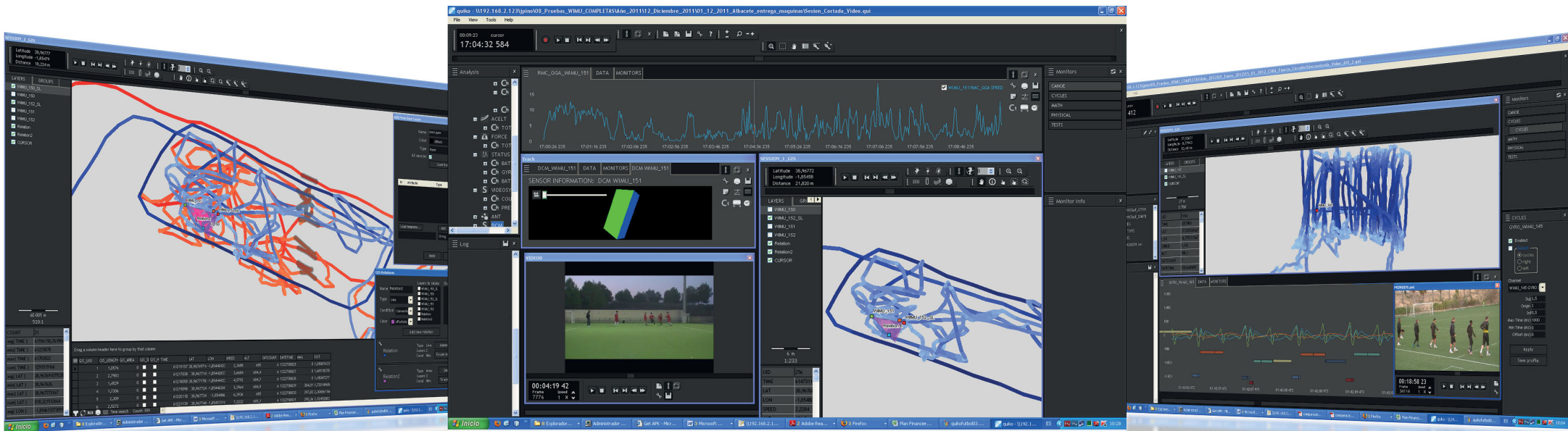
rehab  
rehabilitación

engineering and robotics  
ingeniería y robótica

biomechanics research  
investigación biomecánica

**wimu** monitors physical activity providing accurate and relevant realtime data flow continuously. Cinematic variables such as acceleration, speed, crossed distance or physiological ones such as heart rate, cardiac frequency, among others, are captured by wimu's sensors and then displayed on *quiko*, the software provided with the device.

**wimu** monitoriza la actividad física proporcionando información exacta y relevante de forma continua y en tiempo real. Las variables cinemáticas como aceleración, velocidad, distancia recorrida o las fisiológicas como frecuencia cardíaca, R-R, entre otras, son capturadas por los sensores de wimu y representadas en *quiko*, el software que acompaña el dispositivo.



is a simple and flexible application that gathers data from multiple sensors representing it in real time, that will help athletes, physical trainers, coaches, therapists, doctors, etc., optimizing the daily training to improve output, with a clear competitive advantage: being able to acquire fundamental information to obtain the best results in competition. It will also help controlling and monitoring physical activity in order to improve people's health quality of life.

# qüiko

es una aplicación sencilla y flexible para la adquisición de datos de múltiples sensores con representación gráfica en tiempo real que ayudará a los deportistas, entrenadores, preparadores físicos, recuperadores, médicos, etc., a optimizar el entrenamiento diario para mejorar el rendimiento, con una ventaja competitiva clara, poder disponer de información fundamental para obtener los mejores resultados en competición. También ayudará en el control y monitorización de la actividad física con el fin de mejorar la calidad de vida y el estado de la salud.

<p><b>TIEMPO REAL</b> (3 Sist. Inalámbricos)</p>	<p><b>800 MHz</b> Procesador de 800 Mhz</p>	<p><b>ANÁLISIS TÁCTICO</b></p>	<p><b>CAPACIDAD DE ALMACENAMIENTO</b></p>	<p><b>SOFTWARE BASADO EN GIS</b></p>	<p><b>ANÁLISIS CINEMÁTICO</b></p>
<p><b>ANÁLISIS FISIOLÓGICO</b></p>	<p><b>GEOPOSICIONAMIENTO</b></p>	<p><b>SOFTWARE DINÁMICO E INTUITIVO</b></p>	<p><b>SINCRONIZACIÓN DE VIDEO</b></p>	<p><b>SISTEMA DE CARGA UNIVERSAL</b></p>	<p><b>COMUNIDAD 2.0 ONLINE</b></p>

# wimu

## Device specifications

- 800 Mhz processing capability
- 4 Hz galileo/gps to accurately measure position, speed, distance, precise time, etc
- 3D accelerometer 24G recording at 1000 Hz to track inclination, free fall, flight time, acceleration, impact, charge, reaction time, jump, hits, etc
- 3D gyroscope recording at 250 Hz with 2000 degrees per second resolution to measure angular speed, roll, pitch, yaw, etc
- 3D magnetometer recording at 50 Hz to act as a compass and to assess the movement direction (forwards, backwards, sideways...)
- 10 hz barometer at 120 kPa to ascertain atmospheric pressure, barometric height, weather forecast, etc

- WIFI 802.11 b/g to broadcast data wirelessly and efficiently up to 400 meters
- Bluetooth 2.1 wireless protocol for exchanging data over a 100 meters distance
- ANT+Sport wireless short range technology interoperable with sensors such as hr, podometer, cadence, weight, ecg, blood pressure, etc
- High speed 2.0 USB
- 8 Gb microSD
- Small and light 81x45x19mm and less than 100gr
- Ergonomic and anatomic for optimum comfort
- microUSB standard charging system

# qüiko

## Software features

- WIMU sensors realtime visualization
- Quick and easy data recording
- Stored data playback
- Video sync using several standards AVI, MPEG, MOV, etc
- Intuitive and simple interface
- Data export: XML, EXCEL, HTML, TXT, etc
- Virtual sensors combining other ones from WIMU
- Post-processing edition
- Graphical functions applied to sensors
- Unlimited channels/sensors and WIMU devices
- Several sensors in the same environment
- Full control over environment graphical styles
- Multiple sampling in the same session

- Full zooming functions
- List of sensors with numerical data output.
- Multiple WIMU configuration management

### Recommended PC requirements

- XP / Vista OS
- Pentium dual core 2.4 Ghz

## REALTRACK systems

